

5. Surface Water Use

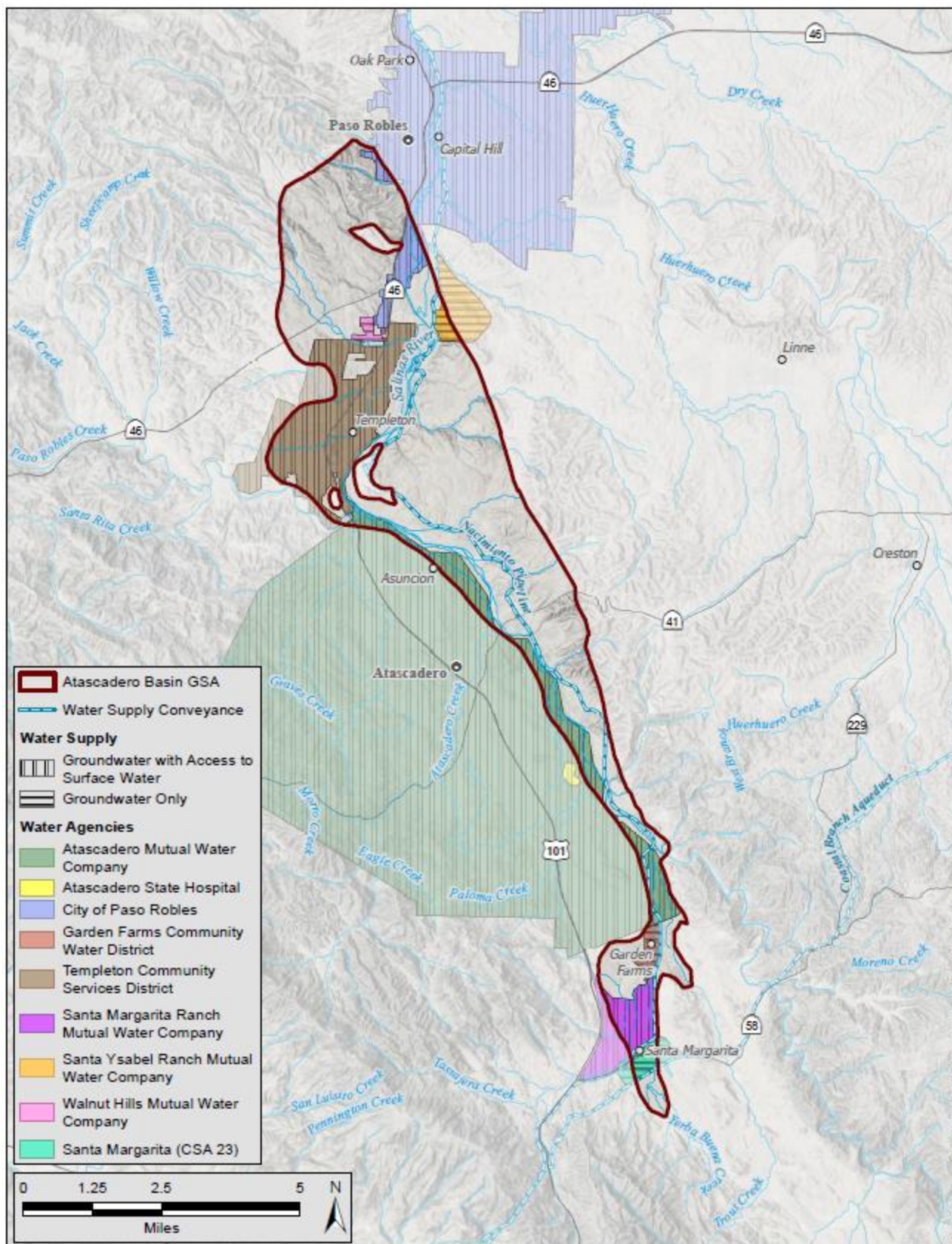
This section addresses the reporting requirement of providing surface water supplies used, or available for use, and describes the annual volume of sources for the WY 2024. The method of measurement and level of accuracy is rated on a qualitative scale. As described in the GSP (Section 6.3.1), the Basin relies on two surface water source types: local imported supplies and local supplies.

Imported supplies are provided via the NWP regional raw water transmission facility delivers water from Lake Nacimiento to communities in the Basin, including Atascadero MWC, Templeton CSD, and the city of Paso Robles. **Figure 10** identifies the communities within the Atascadero Basin that have access to surface water. Within the Basin, all three municipal purveyors utilize their imported NWP water to recharge the Basin *via* percolation ponds or direct discharge located in the Alluvium adjacent to the Salinas River⁶.

- Templeton CSD has an allocation of 406 AFY of NWP water and began taking deliveries in 2011. A total of 74 AF was taken by Templeton CSD in 2011 and constitutes the only NWP deliveries in the historical period (water budget period ending in year 2011) presented in the 2022 GSP.
- Atascadero MWC and the city of Paso Robles began taking deliveries in 2012 and 2013, respectively.

Local surface water supplies include surface water flows that enter the Basin from precipitation runoff within the watershed and Salinas River inflow to the Basin (including releases from the Salinas Reservoir). Annual inflow from these sources is estimated at 90,600 AF with the largest component being releases and flow in the Salinas River.

⁶ The city of Paso Robles utilizes their NWP allocation in two ways: treatment in a package water treatment plant and applying directly to the ground surface on the alluvial gravels of the Salinas River floodplain in the north end of the Basin. The treated portion of NWP water is used outside of the Basin and is therefore not considered.



Z:\Projects\1505070_Atascadero_GSPA_AR_2024\AR009_GW_Communities.mxd RS/S 07 Mar 2024

Figure 10: Communities Dependent on Groundwater and with Access to Surface Water

5.1 Surface Water Available for Use

Table 6 provides a breakdown of surface water available for municipal use in the Basin. There is currently no surface water available for agricultural or recharge project use within the Basin.

Table 6: Surface Water Available for Use

Water Year	Nacimiento Water Project			Total (AF)
	City of Paso Robles ¹ (AF)	Templeton CSD ² (AF)	Atascadero MWC ³ (AF)	
2017	6,488	406	3,244	10,138
2018	6,488	406	3,244	10,138
2019	6,488	406	3,244	10,138
2020	6,488	406	3,244	10,138
2021	6,488	406	3,244	10,138
2022	6,488	406	3,244	10,138
2023	6,488	406	3,244	10,138
2024	6,488	406	3,244	10,138

Notes:

¹ Contract annual entitlement to the city of Paso Robles. Note that city of Paso Robles uses Nacimiento Water Project water in both the Atascadero and Paso Robles Subbasins

² Contract annual entitlement to Templeton CSD

³ Contract annual entitlement to Atascadero Mutual Water Company

AF = acre-feet

CSD = community services district

MWC = mutual water company

5.2 Total Surface Water Use

A summary of total actual surface water use by source is provided in **Table 7**. The accuracy level rating of these metered data is high.

Environmental uses of surface water are also recognized but not estimated due to insufficient data to make an estimate of surface water use. It is expected that environmental uses may be quantified in future annual reports as more data become available.

Table 7: Total Surface Water Use

Water Year	Nacimiento Water Project			Total (AF)
	City of Paso Robles ¹ (AF)	Templeton CSD (AF)	Atascadero MWC (AF)	
2017	134	274	0	408
2018	862	258	854	1,974
2019	356	157	47	560
2020	804	0	1,372	2,176
2021	746	97	2,218	3,061
2022	1,012	131	1,945	3,088
2023	632	144	220	996
2024	487	38	0	526

Notes:

¹ The city of Paso Robles uses Nacimiento Water Project water in both the Atascadero Basin and the Paso Robles Subbasin. Only the portion used in the Atascadero Basin is included here.

AF = acre-feet

CSD = community services district

MWC = mutual water company